



ALKALINE DEGREASING LIQUID DETERGENT

It is used for the extraordinary maintenance of very dirty surfaces to remove organic dirt. It is also suggested for the removal of dirt from construction site on acid-sensitive surfaces, such as not glossy marble, limestone and calcareous stones.



WATER BASE



ALKALINE


ORDINARY AND EXTRA-
ORDINARY MAINTENANCE

TECHNICAL CHARACTERISTICS

The product is orange. Concentrated product to be diluted in water.

WHERE TO APPLY IT

- PORCELAIN GRES**
- NATURAL STONES**
not glossy
- CERAMIC TILES**
- KLINKER**
- COTTO**
- CEMENT**
- PVC**
- GRANITE**
- MARBLE**
not glossy



PLUS/ADVANTAGES

- REMOVES SYNTHETIC DIRTINESS (BEESWAX, PAINT, VARNISH, TAR, SYNTHETIC OILS AND INK)**
- REMOVES GREASY DIRT (OIL, ANIMAL AND VEGETABLE FATS, SOAP, NAFTA)**

TECHNICAL DATA

Density at 25 °C gr/cm³ 1.1

Appearance clear liquid

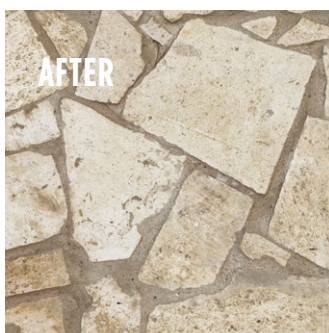
Colour orange



pH 11,5, alkaline

COVERAGE/DILUTION

Daily cleaning and descaling:
dilution from 1:20 to 1:100

Oil and particularly resistant grease:
dilution from 1:20


HOW TO APPLY IT

Tools



Can be applied using brush, a cloth or a single brush machine or pressure washer.

Mode

Apply the solution on the floor, leave on for a few seconds, then use a single brush machine or manually a brush for removing and scrubbing the dirt and then rinse at the end. Before proceeding with an extensive application, always test in a hidden corner the effective resistance of the material to the cleaning product. The product may damage the aluminium and painted surfaces.

PACKAGING

0,75-5-10-20-200 litres.

HOW TO STORE IT

Under normal conditions of use and work, the product stored properly away from heat, moisture and direct sunlight is guaranteed 12 months. Close carefully the packaging after use.

WARNINGS

Keep out of reach of children. Avoid contact with skin and eyes. Do not mix with other substances: If the surface is treated for the first time it is advisable to assess the effect and the adherence of the tile on a sample or a hidden corner.

LEGISLATION

Before use please read the instructions on the safety data sheet and the following notes on the cans.

CLOSE THE CONTAINER AFTER USE.

FOR PROFESSIONAL USE ONLY.

Information contained in this data sheet is up-to-date and correct as at the date of issue. As TENAX cannot control or anticipate the conditions under which this product may be used, each user should review the information in specific context of the planned use. TENAX will not be responsible for damages of any nature resulting from the use or reliance upon the information contained in this data sheet. TENAX is not responsible for incorrect use of the product.



Scans to
access
multimedia
contributions